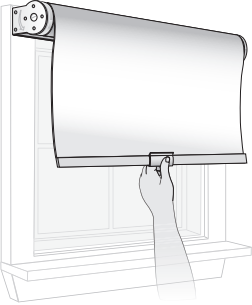


Cordless Roller Shade EXACT LIFT

operation

LOWER SHADE

Pull straight down on the center of the bottom bar to lower the shade to exact desired position.



RAISE SHADE

Push center of bottom bar up to exact desired position, then release shade.

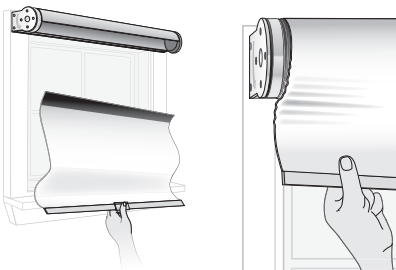
CORDLESS LIFT ASSIST

Used to raise and lower Exact Lift shades.



IMPROPER USE WILL LEAD TO

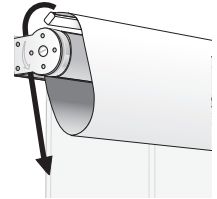
Separation of shade from roll, fraying edges or telescoping.



troubleshooting

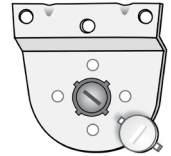
NOT RAISING FULLY

Raise shade as far as it will go, then gently wrap the bottom bar up and around the shade roll once.



TENSION CONTROL*

This is a fine adjustment control; you may need to rotate the screw several times around to make desired changes. If your shade is in a cassette, remove the right end cap to locate the tension control screw.

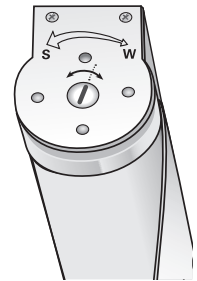


** If your tension screw is covered with a plastic cap, remove the cap to make the tension adjustment.*

Tension Screw Cap

UNABLE TO RAISE

If the shade stays put rather than raising, increase the tension by turning the screw on the right end of the shade **counter-clockwise**.



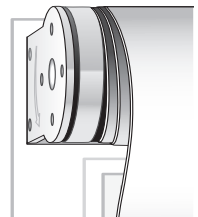
Tension Control; right (Counter-clockwise for stronger tension/speed)

RAISES TOO FAR

If the shade continues to raise after you position it, decrease the tension by turning the screw on the right end of the shade **clockwise**.

TELESCOPING

If the shade is telescoping, resolve it by lowering the shade completely, and then slowly raising it completely from the center of the bottom bar. If necessary, also ensure that the shade is level.



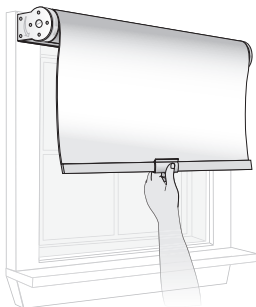
Cordless Roller Shade

EASY LIFT

operation

LOWER SHADE

Pull straight down on the center of the bottom bar to lower the shade.



RAISE SHADE

Push center of bottom bar up to exact desired position, then release shade.

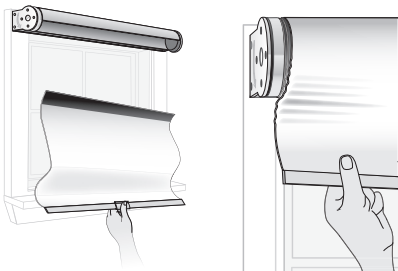
CORDLESS LIFT ASSIST

Used to lower Easy Lift shades.



IMPROPER USE WILL LEAD TO

Separation of shade from roll, fraying edges or telescoping



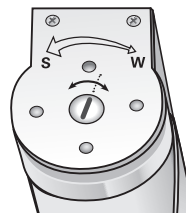
troubleshooting*

Both the tension and stop limit are fine adjustment controls; you may need to rotate the screw several times around to make desired changes.

* If your shade is in a cassette, remove the end cap to locate the tension or stop limit control screw.

ADJUST TENSION

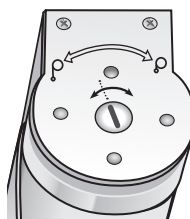
Control the shade speed by adjusting the spring tension screw on the right end. Turn **counter-clockwise** to increase the speed.



**Tension Control; right
(Counter-clockwise
for stronger tension/
speed)**

CHANGE UPPER STOP LIMIT

Change the upper stop limit by adjusting the screw on the left end of the shade. Turn **clockwise** to raise the upper stop limit.



**Stop Limit; left
(Clockwise to raise
limit)**

TELESCOPING

If the shade is telescoping, resolve it by lowering the shade completely, and then slowly raising it completely from the center of the bottom bar. If necessary, also ensure that the shade is level.

